

# OLYMPUS®

Olympus is about life. About photographic innovations that capture precious moments of life. About advanced medical technology that saves lives. About information- and industry-related products that make possible a better living. About adding to the richness and quality of life for everyone. Olympus. Quality products with a **FOCUS ON LIFE**

SYSTEM MICROSCOPE  
**CX41**  
CX2 SERIES

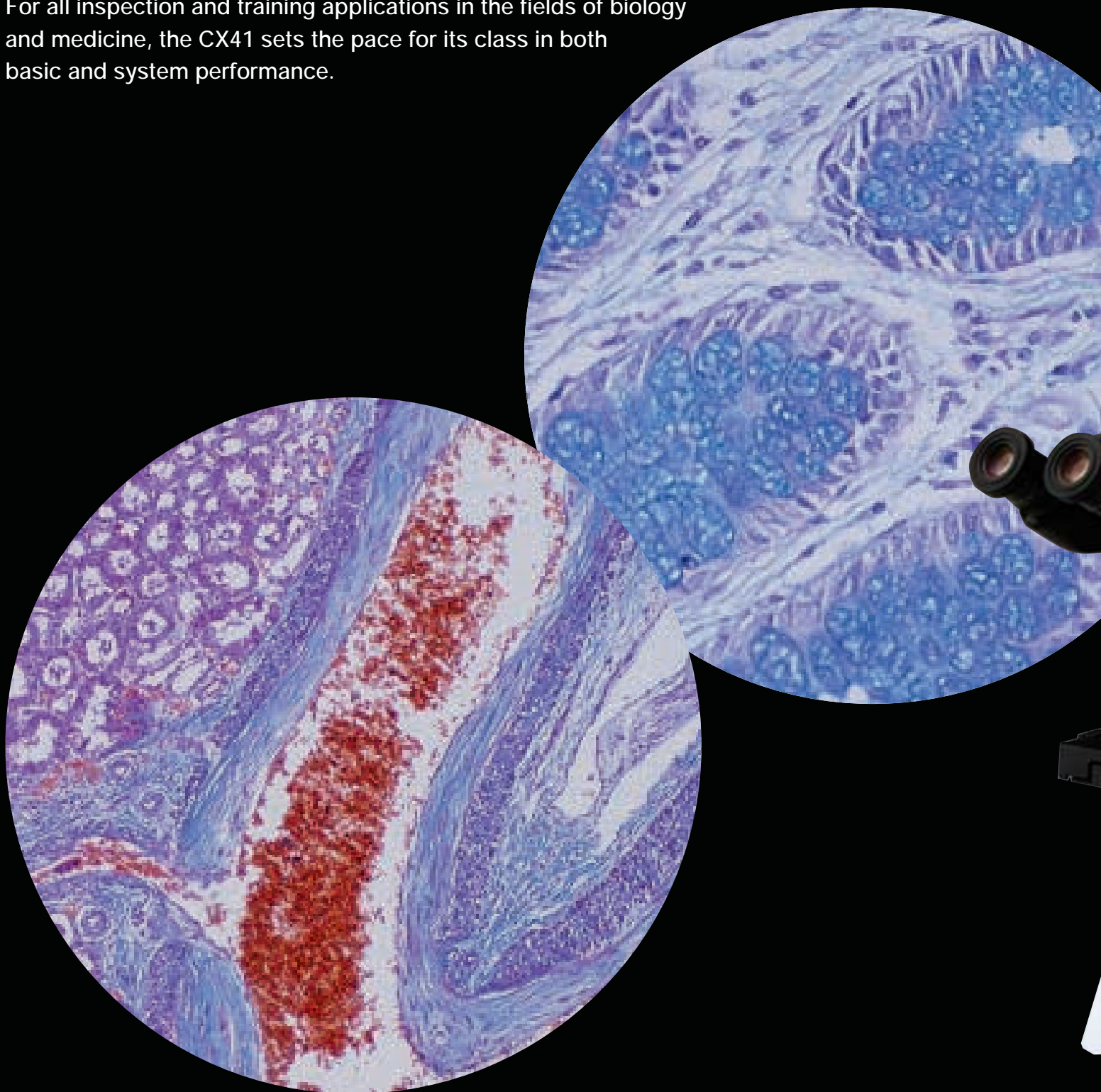
*Optics and performance outstanding in its class*

*UIS*  
UNIVERSAL  
INFINITY SYSTEM



# Advanced optical and system performance with excellent cost-efficiency

The evolution of this bestselling microscope delivers new, cost-efficient improvements in both optics and system performance. Newly equipped with Olympus' leading-edge UIS optical system, it provides significantly enhanced image clarity in a variety of observation methods, from brightfield to reflected light fluorescence. For all inspection and training applications in the fields of biology and medicine, the CX41 sets the pace for its class in both basic and system performance.

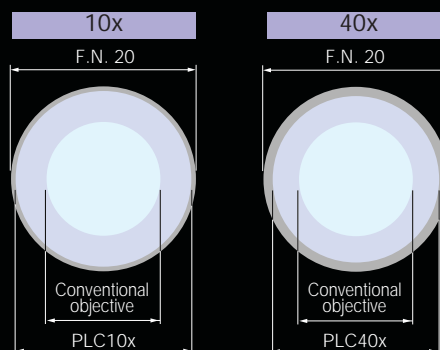




## Outstanding flat images from Plan C objectives

The CX41 provides images of outstanding brightness and clarity in a variety of observation modes. As well as Olympus' renowned UIS optics infinity system, it employs the newly developed PLC series of Plan Achromat objectives, which are made from carefully selected top quality glass and manufactured with the most rigorous precision. The result is a major improvement in image flatness, with the 10x and 40x objectives in particular providing images that are among the very best in this class of microscope. Transmitted light illumination is from a 6V, 30W high-intensity halogen light source.

### Flatness area comparison





# Excellent cost-performance in reflected light fluorescence and other observation methods





**Slide condenser / CX-SLC  
Brightfield condenser / CH3-CD**  
These Abbe type condensers allow brightfield observations from 4x to 100x. Accurate centering is provided by the attachment lens (CX-AL) and the iris diaphragm, to exclude unnecessary light and obtain bright Koehler illumination right across the magnification range. These highly economical condensers enable phase-contrast and darkfield observations by simply adding basic accessories.



**Simple phase contrast attachment / CX-PH1, 2, 3**  
For phase-contrast observations at 10x, 40x and 100x.



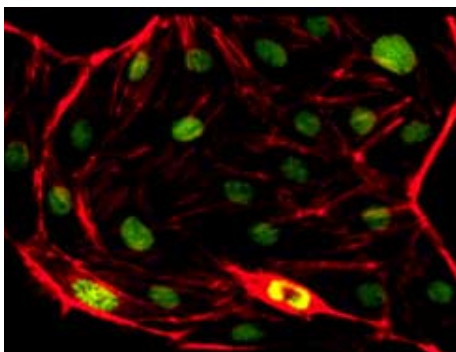
**Darkfield central stop / CH2-DS**  
For darkfield observations from 4x to 40x.  
\* Separate filter holder (CH2-FH) or attachment lens (CX-AL) required.



**Low magnification adapter /CX-LA**  
Use of the 2x low magnification objective allows macro observation.

## Reflected light fluorescence attachment / CX-RFL-2

Users can swap between blue or green excitation and transmitted light observations. UIS optics provide bright fluorescence images, with no intermediate magnifications when changing from transmitted light to fluorescence observation. Standard PLC objectives can be used without replacement.



## Simple polarizing condenser / CH3-CDP

With the optional plate adapter U-TAD, polarizing observations from 4x to 100x using a tint plate can be performed. A U-GAN analyzer is provided for gout inspection. Polarizing objectives from 4x to 100x are available.

\* Separate polarizer U-POT and analyzer U-ANT required.



## Dry darkfield condenser / CX-DCD

This dry-type darkfield condenser gives a superior darkfield effect without the need for immersion in oil. Suitable for use at 10x and 40x magnifications.



# Dependable basic performance assures outstanding operational convenience



## Move the specimen with just one finger

Rubber grips are provided for the stage handles, allowing the specimen to be moved smoothly with just one finger. The slim body and conveniently positioned controls ensure that everything is within easy reach, so operators can maintain a natural posture.



## Tilting binocular tube

The tilting binocular tube lets each operator select the most suitable and comfortable eyepoint — a valuable contribution to reducing fatigue in extended observation sessions.



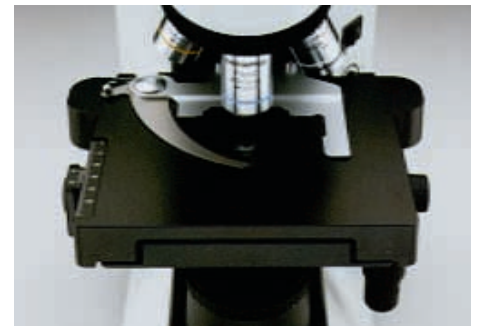
## Inward-facing quintuple revolving nosepiece

The quintuple revolving nosepiece enables a wide range of magnification observations and various combinations of objectives. Unrestricted access to the space in front of the objective allows specimens to be exchanged quickly and easily.



## Rackless stage with enhanced operability

To keep the work area clear, and to avoid interference with observation operations, the X-direction travel guide does not extend out from the side of the stage. The main and sub scale displays are designed for easy read-out.



## Phase-contrast condenser / CX-PCD

The multi-purpose CX-PCD condenser allows observation of brightfield, phase-contrast and darkfield images without exchanging condensers. Phase-contrast observation from 10x to 100x and darkfield observation from 10x to 40x is allowed.



## Torque adjustable focusing knob

The torque of the coarse focusing knob can be adjusted, to suit different operators' needs and to make focusing smooth and easy while keeping the hands on the desk. A stage upper limit stopper is also provided.



## Easy transportation and installation

The CX41 is eminently portable, with convenient handgrips at the front and back of the frame and no sudden, inconvenient protrusion of the stage guide.



## Anti-fungus treatment

The treatment applied to the observation tubes, eyepieces and objectives, protects quality of optical parts even in high humidity regions.

# More accessories, more observation versatility



## Easy digital imaging

A simple eyepiece adapter enables an Olympus digital camera to be attached to binocular tube U-CBI30-2 — an easy, practical and cost-efficient means of obtaining digital images.



## Dual observation attachment / U-DO3

Enables dual, simultaneous observation of a single specimen from the same direction with equal magnification and brightness for both operators. A pointer can be used to indicate specific sections of the specimen to simplify the training process and promote discussion.

## Eyepoint adjuster / U-EPA2

Allows the eyepoint position to be raised by 30mm. Up to two eyepoint adjusters can be attached between the frame arm and observation tube.



## Arrow pointer / U-APT

Enables insertion of an LED arrow for display in a photomicrograph.



## Trinocular tube / U-CTR30-2

Still digital (DP11) or video cameras can be attached for on-site/remote illustration of educational/discussion meetings.

## Trinocular intermediate attachment / U-TRU

A binocular tube on its own allows photomicrography. Combination with this intermediate attachment type trinocular tube makes it possible to attach photographic equipment and a video camera at the same time.



CX41+DP11



## 2x magnification changer / U-ECA

Magnification is doubled by engaging the auxiliary 2x lens.



## Drawing attachment / U-DA

The drawing attachment projects an image of the pencil and drawing surface into the visual field.



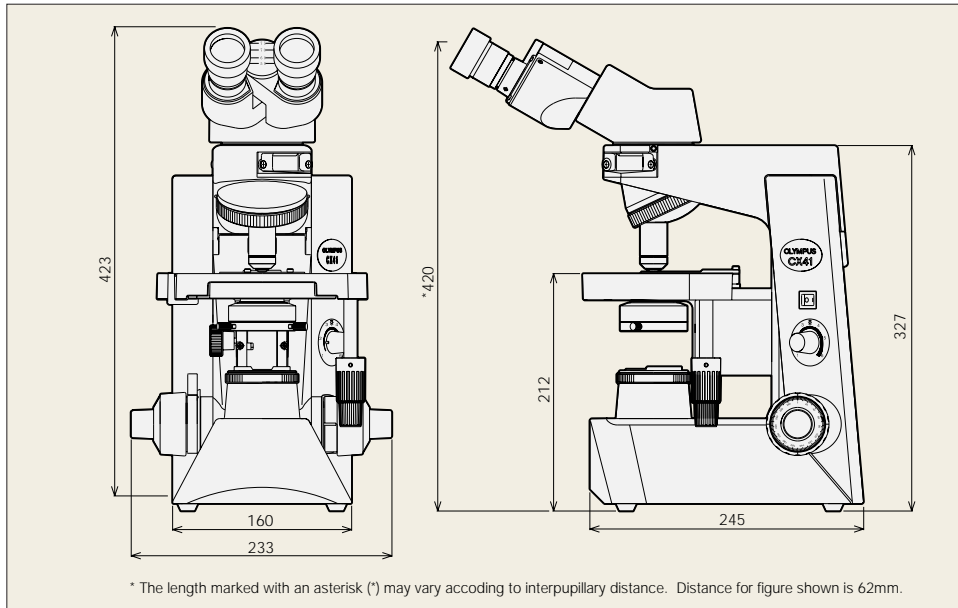


## Specifications

Item	CX41		
Optical system	UIS (Universal Infinity-corrected) optical system		
Illumination	Built-in transmitted Koehler illuminator 6V30W halogen bulb 100-120V/220-240V~ 0.85/0.45A 50/60Hz		
Focusing	<ul style="list-style-type: none"> <li>•Stage height movement by roller guide (rack &amp; pinion)</li> <li>•Stroke per rotation: 36.8mm</li> <li>•Full stroke range: 25mm</li> <li>•Upper limit stopper</li> <li>•Tension adjustment on coarse focus adjustment knob</li> </ul>		
Revolving nosepiece	Fixed quintuple nosepiece with inward tilt		
Observation tube	Type	U-CBI30-2, Binocular	U-CTR30-2, Trinocular
	Field number	20	20
	Tube inclination	30°	30°
	Interpupillary distance adjustment range	48-75mm	48-75mm
	Light path selector	None	None (Bi 50%, Video/Photo 50% fixed)
Stage	Size	188(W)x134(D)mm	
	Movement range	76mm X-direction x 50mm Y-direction	
	Specimen holder	Double slide holder	
	Rubber grip	Equipped as standard	
Condenser	Type	Abbe condenser, with built-in daylight filter	
	N.A.	1.25 with oil immersion	
	Aperture iris diaphragm	Built-in	
Dimensions & weight	233(W)x432(H)x367.5(D)mm, approximately 8.5kg (approximately 18.7 lb.)		

## Dimensions

(Unit: mm)



## Objectives, Plan Achromat

PLC	Numerical Aperture (N.A.)	Working Distance (W.D.)
4x	0.10	22.0mm
10x	0.25	10.5mm
40x	0.65	0.56mm
100x Oil	1.25	0.13mm

## Eyepiece

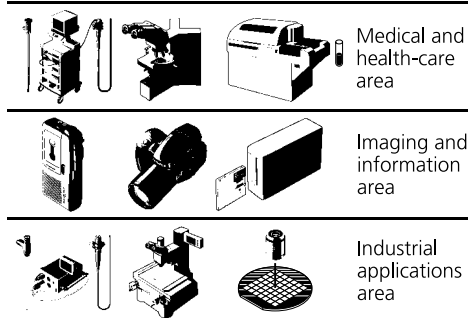
	Field Number (F.N.)
WHB10x	20

Web site address: <http://www.olympus.com>



Specifications are subject to change without any obligation on the part of the manufacturer.

## Olympus business areas



# OLYMPUS®

FOCUS ON LIFE

**OLYMPUS OPTICAL CO. LTD.**  
 San-Ei building, 22-2, Nishi-Shinjuku 1-chome, Shinjuku-ku, Tokyo, Japan  
**OLYMPUS OPTICAL CO. (EUROPA) GMBH.**  
 Postfach 10 49 08, 20034, Hamburg, Germany  
**OLYMPUS AMERICA INC.**  
 2 Corporate Center Drive, Melville, NY 11747-3157, U.S.A.  
**OLYMPUS SINGAPORE PTE LTD.**  
 491B River Valley Road, #12-01/04 Valley Point Office Tower, Singapore 248373  
**OLYMPUS OPTICAL CO. (U.K.) LTD.**  
 2-8 Hondurass Street, London EC1Y 0TX, United Kingdom.  
**OLYMPUS AUSTRALIA PTY. LTD.**  
 104 Ferntree Gully Road, Oakleigh, Victoria, 3166, Australia